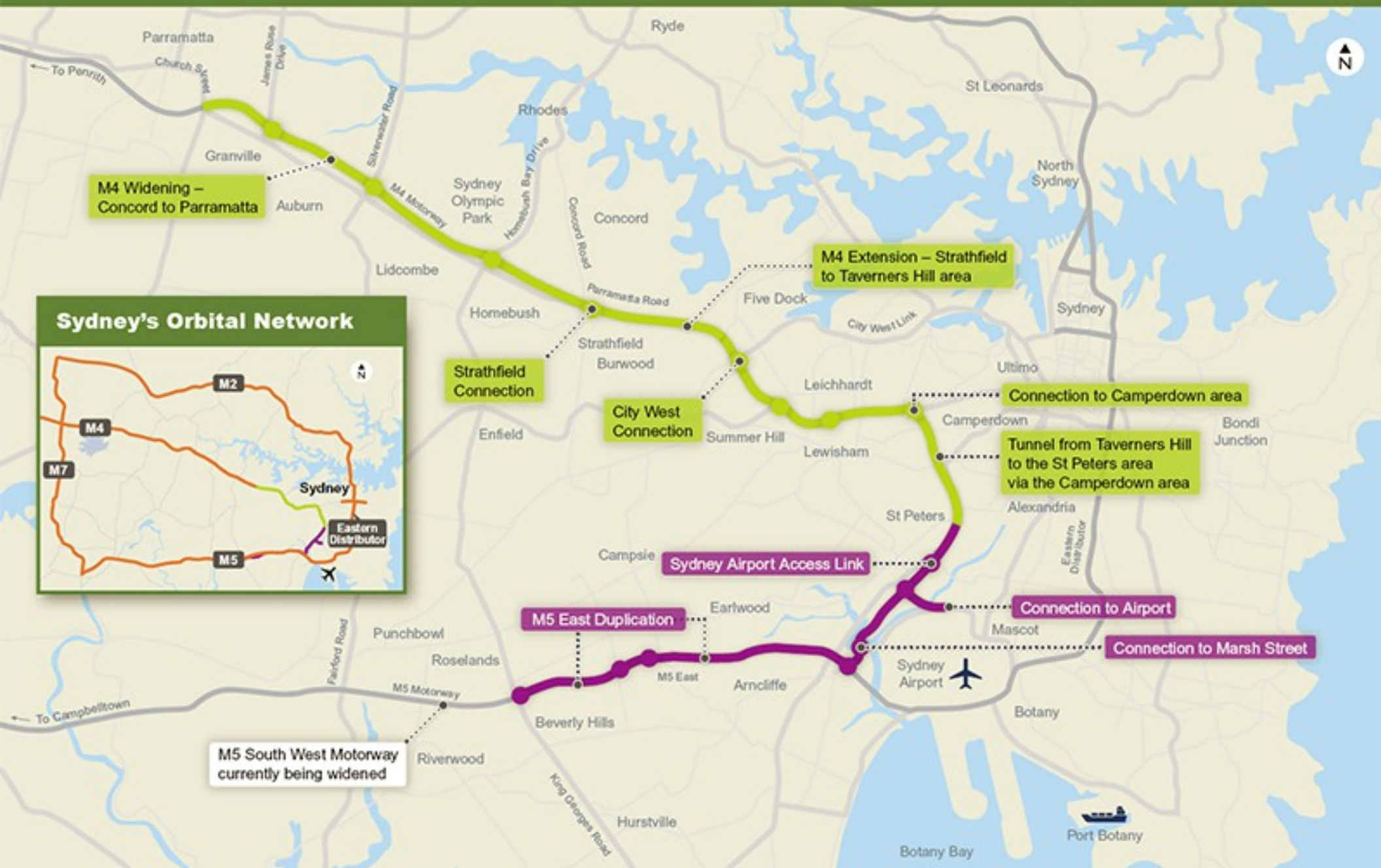
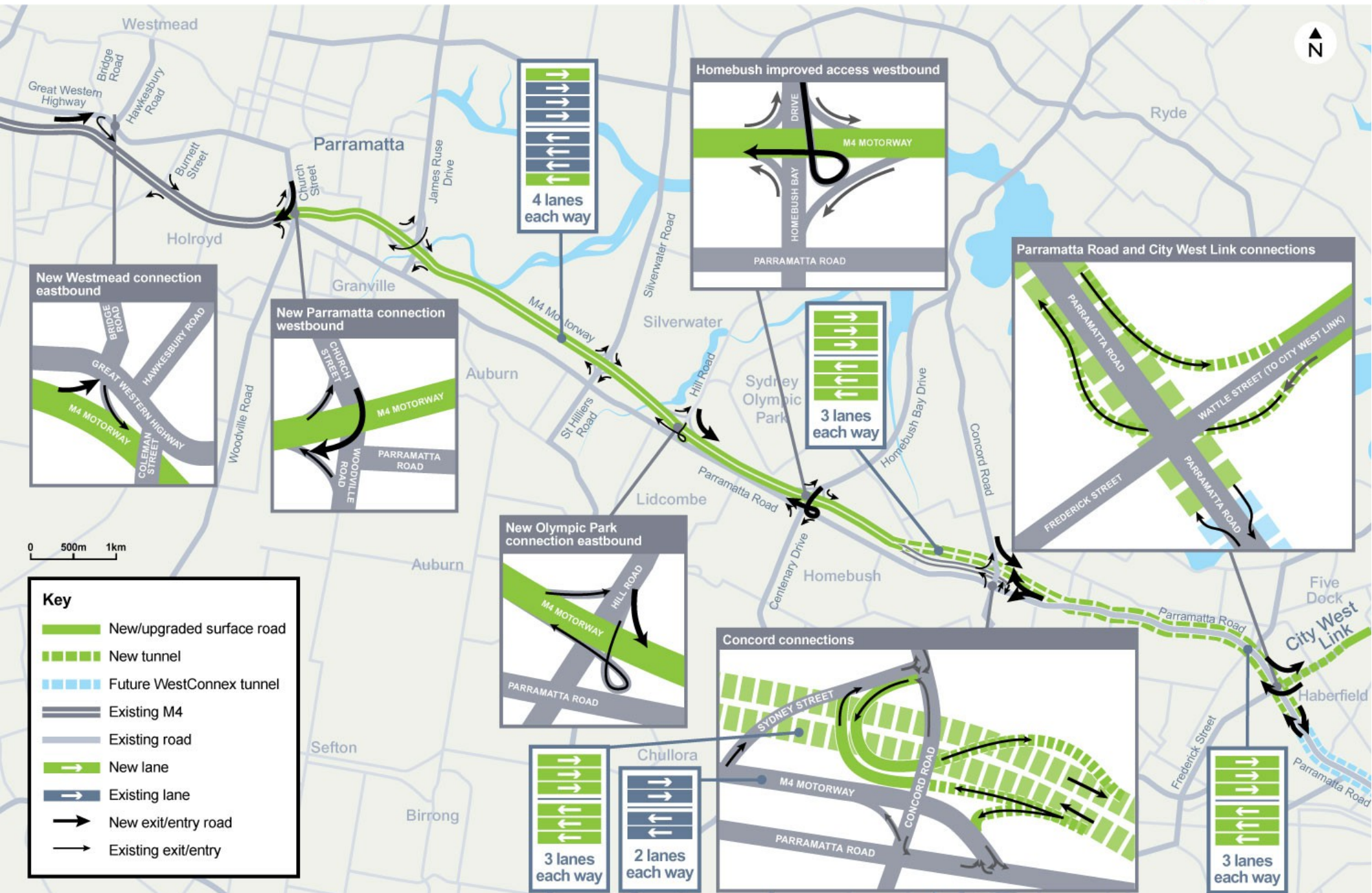


WestConnex – Building for the Future



WestConnex – Stage 1: Parramatta to City West Link



MUNICIPALITY OF
BURWOOD

MUNICIPALITY OF
LEICHHARDT



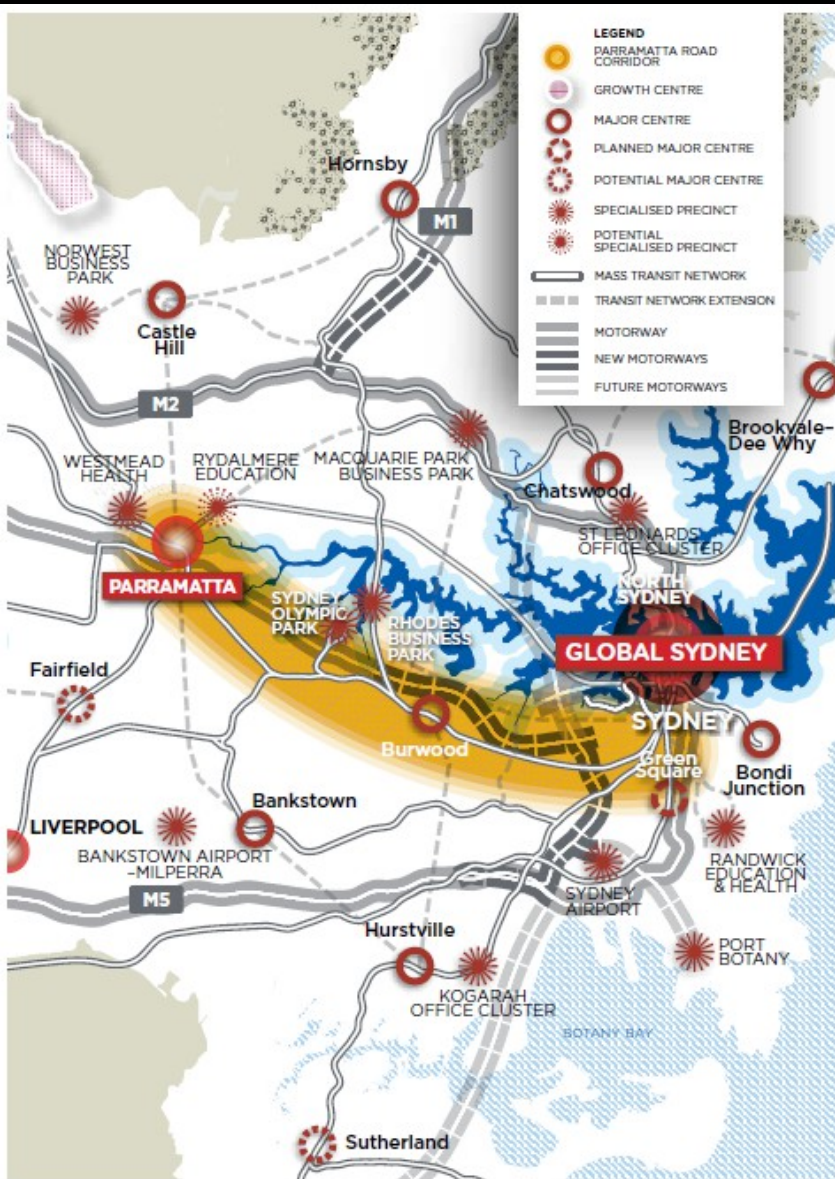


Figure 7: Parramatta Road Corridor

Parramatta Road Corridor

The Parramatta Road Corridor connects Global Sydney and Parramatta via Sydney Olympic Park. It is one of the busiest road corridors in Sydney.²⁹

The WestConnex Motorway will provide opportunities to transform the local centres that exist alongside the Corridor and better connect them as Sydney Olympic Park grows.

The Parramatta Road Corridor offers prime regeneration opportunities to create lively, well-designed centres with improved north-south and east-west linkages currently limited by the busy Parramatta Road.

This will help to deliver a diversity of housing and jobs choices, close to the shops and services in a new, liveable context.

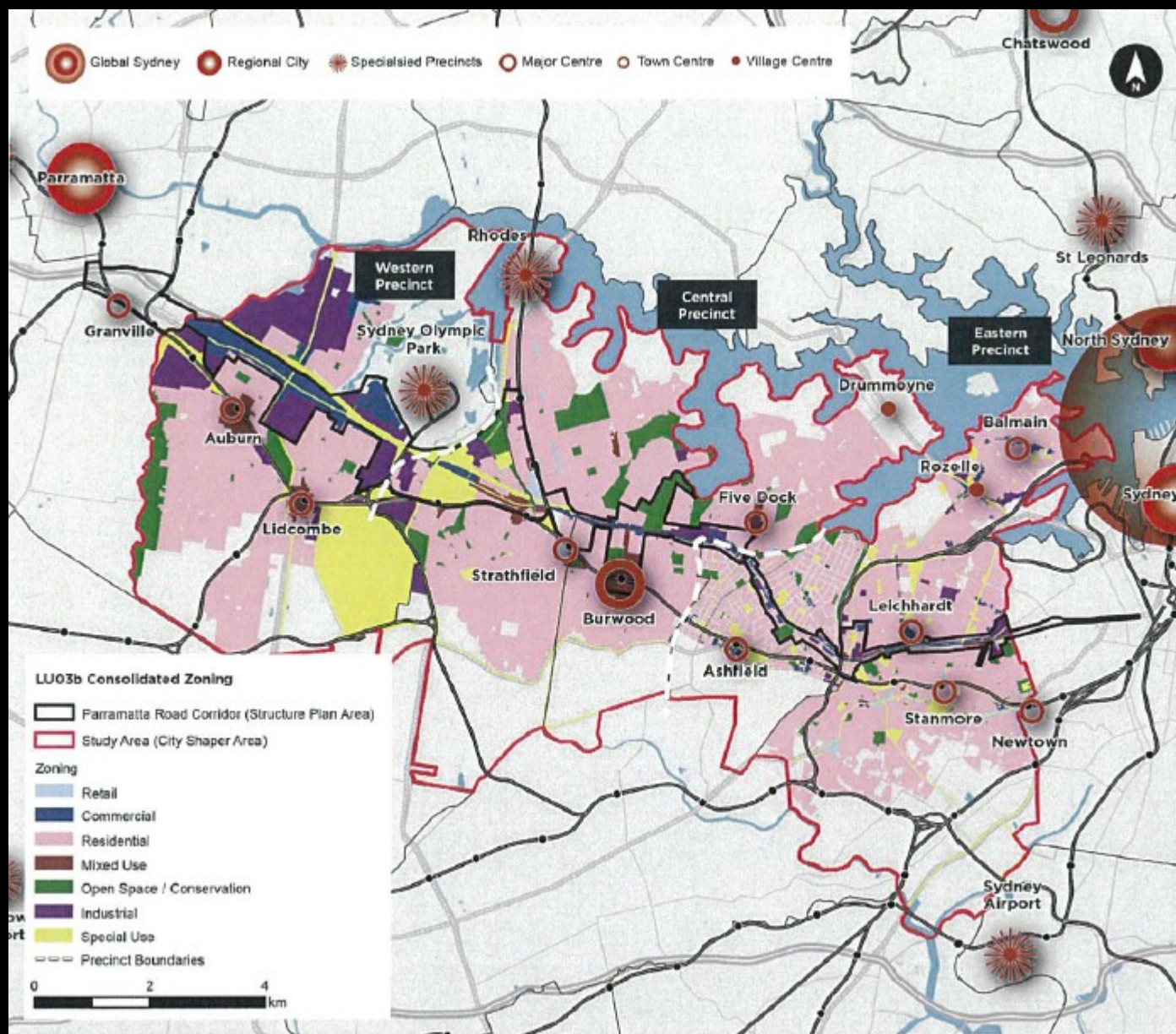
Priorities for Parramatta Road Corridor

- deliver improved road connections through the WestConnex Motorway,³⁰ ensuring improvements allow for better links between local centres so they can flourish and attract new investment
- deliver stronger east-west connections along, and at grade north-south connections across, Parramatta Road
- focus on Sydney Olympic Park as a Specialised Precinct to be a major location for employment, high density housing, sports and entertainment
- use the planned regeneration³¹ to better integrate Sydney Olympic Park into adjacent areas
- facilitate delivery of Urban Activation Precincts at Carter Street and Wentworth Point as part of the wider regeneration of Sydney Olympic Park
- create high quality places and spaces at key points along and adjacent to Parramatta Road
- plan for well-designed housing including smaller dwellings and apartments to ensure the Corridor achieves a higher population density that can stimulate business and retail investment
- plan for a viable and frequent public transport service the length of the Corridor.

²⁹ Transport for NSW 2012, NSW Long Term Transport Master Plan, NSW Government, Sydney, NSW, P152.

³⁰ NSW Department of Premier and Cabinet 2012, State Infrastructure Strategy, NSW Government, Sydney, NSW P7 and Transport for NSW 2012, NSW Long Term Transport Master Plan, NSW Government, Sydney, NSW, P137.

³¹ Sydney Olympic Park Authority 2010, Sydney Olympic Park Master Plan 2030, NSW Government, Sydney, NSW.



Existing Consolidated Land Zoning

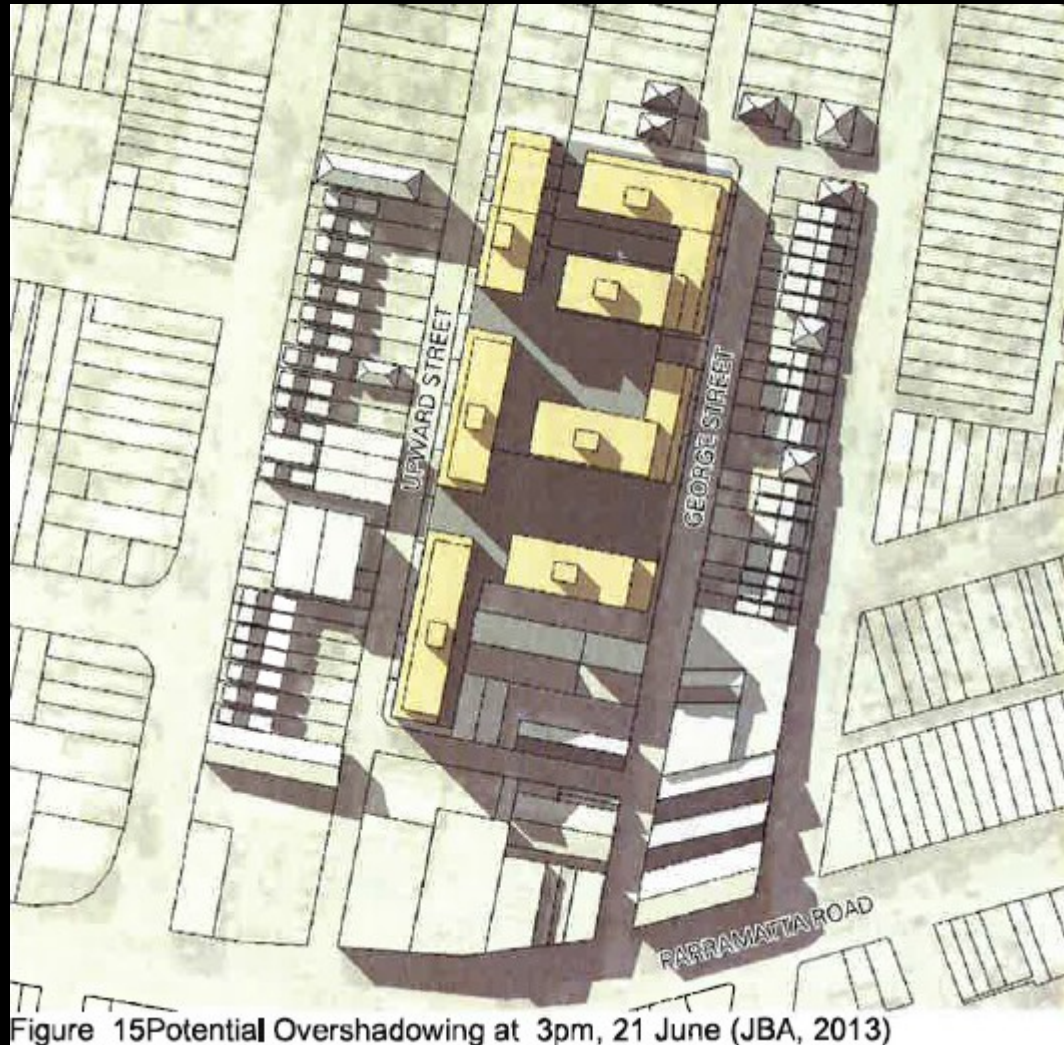


Figure 15 Potential Overshadowing at 3pm, 21 June (JBA, 2013)







